



# LABOR SAVERS









# what's inside

**1** **LABOR SOLUTIONS**

---

**7** **BREAKFAST**

---

**9** **PRODUCE**

---

**13** **SOUPS & SALADS**

---

**14** **BASES & SAUCES**

---

**15** **FULLY COOKED PROTEIN**

---

**21** **SEAFOOD**

---

**23** **DESSERT**

---

**25** **READY MADE MEALS**

---



# Make Your Restaurant a Great Place to Work

## OFFER PROFESSIONAL DEVELOPMENT AT ALL LEVELS

Most employees receive foundational on-the-job training, though employees do wish they received more career advancement training. Opportunities for professional development are critical to employee satisfaction and, subsequently, lower turnover rates.

## CREATE A GROWTH PATH FOR YOUR EMPLOYEES

A big contributor to restaurant turnover is having overqualified employees who feel they are stuck in entry-level positions. It's crucial to think of all new hires and existing employees as potential managers and operators, making proper training a vital strategy for long-term growth and retention. Make the paths to higher level jobs at your restaurant clear and attainable.

## CHANGE YOUR MANAGEMENT STYLE

A simple strategy for retaining talent is considering your approach to managing staff. Open communication and transparency will strengthen the relationship between the owner and staff. Try involving your employees in the high-level decisions that will affect their everyday routine, for example. This will help foster a culture of trust and empower everyone involved.

## TOP REASONS RESTAURANT EMPLOYEES LEAVE A RESTAURANT JOB

24%

Wasn't paid enough

16%

Life circumstances outside the restaurant

13%

Didn't have good relationship with manager

12%

No opportunities for growth



## LATE-NIGHT COOKING CLASSES

At Chicago's upscale Blackbird, Chef Ryan Pfeiffer hosts late-night cooking classes in his kitchen after hours for his chefs and others from nearby restaurants. Previous "After School Demos" have taught chefs how to break down a whole pig, Japanese fish-slaughtering and how to prepare a French galantine.





### PAID INTERNSHIP/SCHOLARSHIP PROGRAMS

Fast casuals such as Honeygrow, Hopdoddy Burger Bar, and Tender Greens are looking to use education as a tool, not only to help existing employees grow and become better workers, but also as an enticement for others, especially younger generations, to join and remain with their teams.

Tender Greens has developed an educational initiative dubbed the Sustainable Life Program. a six-month paid internship offered to emancipated foster youth interested in the culinary arts.

### PARTNER UP!

Reach out to your community for support. Build relationships with local organizations, high schools, college fairs and after-school programs to offer free training or skill-building workshops to people in exchange for a term of employment. Becoming a pillar of the community sets the foundation for harmonious partnerships where the restaurant will get staff, and the employees will receive a valuable skill set as they enter the labor market.



### HOMEWORK HOUR.

Imagine getting paid to do homework!?! A well-established restaurant contacted the Guidance Department of their local School District. An idea was proposed where the students that had an interest in working at the Restaurant could get dropped off right after school, clock in and do their homework for an hour while getting paid.

# Strategic Recruiting

## CREATE A STAFF REFERRAL PROGRAM

If you already have some great employees, odds are they know other restaurant workers who are also great at what they do. Enlist their help in the hiring process by implementing an employee referral program. Offer a bonus to any staff member who refers someone you end up hiring. They'll help spread the word about your job openings.

## UTILIZE SOCIAL MEDIA MARKETING

The younger generations react to short, personalized videos on social media platforms, like Facebook, Instagram, Twitter, LinkedIn, TikTok, and YouTube. Create a video showcasing your brand, company culture, work environment, and employee benefits.

## TRANSFORM YOUR JOB DESCRIPTIONS

Ensure that the job requirements clearly outline each position's requirements, duties, and expectations. This will help you attract suitable candidates and make onboarding easier. Tell job seekers who you are, what you do, and why you do it—don't be afraid to get to the heart and soul of your business.

## Throw a Hiring Party

Hold hiring parties that offer free food in a festive atmosphere with on-site applications and on-the-spot interviews. Some sites report receiving twice the number of applications needed to fill open positions.



## WHERE TO POST YOUR JOB LISTING

- Career Builder
- Craigslist
- Culintro
- Facebook
- Indeed
- Good Food Jobs
- Jobs on the Menu
- LinkedIn
- Monster
- Poached
- Snagajob
- Culinary Agents



# leveraging technology

While the restaurant industry finds its footing, technology can help ease some of the challenges that stem from the ongoing labor shortage. Here's how to make the most of tech tools to streamline your workflow and take some of the pressure of the staff you do have.

# plato

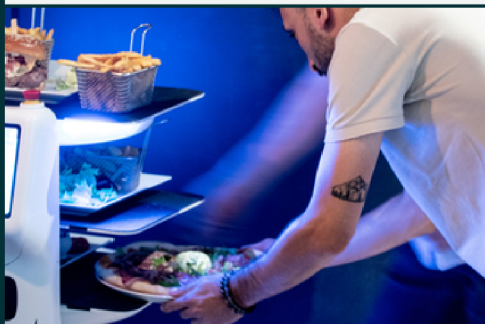
Introducing a new way to integrate robotics into the hospitality industry. Plato multiplies your workforce and amplifies your service environment to create a memorable guest experience.

## A Service Robot Made for everyday tasks



### HELPING STAFF

Plato helps staff by delivering food and drinks directly to guests via voice command or tablet.



### REDUCE RISK

With 25,000 slip and fall accidents every day in the US, Plato creates a safer work environment by alleviating workload for staff and reducing risk for work related injuries.



### IMPROVE SERVICE

Outpace the competition and drive sales by allowing staff to spend more time with guests, increasing table turnover rate and "wow" factor of Plato.





## Pay your compliments, to the chef.

The first platform that connects "back of house" staff with their patrons, allowing diners to send some love to everyone that made it happen, from the head chef to the dishwasher.



## We help you and your staff get paid.

We provide everything you need to start receiving tips from customers and getting your staff paid!

### Onboard

Create a team, then invite and manage your staff members.

### Collect

Display our QR code to patrons and watch as the tips roll in!

### Payout

Determine who gets what and send the tips their way.

Dashboard

Total Tips: **\$718.97**

Tips Received: **157**

Avg. Tip: **\$3.50**

Amount	Date
\$3.00 <span>Paid</span>	July 18th, 2022, 10:30 PM
\$2.00 <span>Paid</span>	July 18th, 2022, 9:30 PM
\$3.00 <span>Paid</span>	July 18th, 2022, 8:30 PM
\$5.00 <span>Paid</span>	July 18th, 2022, 7:30 PM
\$3.00 <span>Paid</span>	July 18th, 2022, 6:30 PM
\$4.00 <span>Paid</span>	July 18th, 2022, 5:30 PM
\$3.00 <span>Paid</span>	July 18th, 2022, 4:30 PM
\$4.00 <span>Paid</span>	July 18th, 2022, 3:30 PM





**LABOR  
SAVING  
PRODUCTS**



# BREAKFAST TIME

## FULLY COOKED BACON

008518	BACON PRE COOKED EXTRA THICK	2/150 CT	DAILYS
873009	BACON PRE COOKED 300CT	2/1.5 LB	PACKER
400300	BACON TOPPING 1/2" FC	2/5 LB	HORMEL

## FULLY COOKED SAUSAGE

416657	SAUSAGE LINK CHICKEN FC 1.4 OZ	1/10 LB	JONES
871014	SAUSAGE PATTY 2OZ FC	1/10 LB	FARMLAND
871005	SAUSAGE PORK LINK FC SKNLS	1/10 LB	FARMLAND
231291	SAUSAGE SWEET LINK FC	1/10 LB	BUONA VITA

## POTATOES

831201	HASH BROWN PATTIES OVENABLE	240/2.12 OZ	CAVENDISH
833003	HOME FRIES SLICE 3/16	6/5 LB	SIMPLIT
833051	POTATO DICED SEASONED	6/5 LB	CAVENDISH
700404	POTATO PANCAKE OLD EURO	6/5 LB	SIMPLIT
700283	POTATO TOTS (NUGGETS) GOLDEN	6/5 LB	CAVENDISH

## EGGS & OMELETTES

055001	EGG HARD COOKED	2/10 LB	NEWBURG
051912	EGG HARD COOKED PEELED	12/12 CT	PAPETTI
410021	EGG PATTY SCRAMBLED ROUND	120/1.5 OZ	PAPETTI
893042	EGG PATTY VEGAN	120/2 OZ	JUST EGG
054001	EGG SCRAMBLED COOKED	8/2.5 LB	EGG LOW
171232	EGG SCRAMBLED MIX CN	6/5 LB	PAPETTI
171205	OMELETTE CHEESE	72/3.5 OZ	PAPETTI
171201	OMELETTE HALF MOON WESTERN	60/3 OZ	JUNO CHEF
171211	OMELETTE PLAIN 5.5	84/3 OZ	PAPETTI

## HEAT & SERVE



**BELGIAN WAFFLE SQUARE**  
KRUSTEAZ, 72/2.4 OZ  
# 931450



**WAFFLE HOMESTYLE ROUND**  
EGGO, 144/1.23 OZ  
# 123077



**PANCAKES GTF**  
VANS, 12/8 CT  
# 939604



**BUTTERMILK PANCAKES**  
EGGO, 144/1.36 OZ  
# 123078



**BELGIAN WAFFLE STICKS WGR**  
KRUSTEAZ, 216/78 OZ  
# 931468



**FRENCH TOAST STICKS**  
PAPETTI, 100/2.6 OZ  
# 520101



**FRENCH TOAST WGR STICKS**  
RICH'S, 12/2 LB  
# 931456



**FRENCH TOAST WGR STICKS**  
BAKE CRAFTERS, 2/5 LB  
# 926056



**FRENCH TOAST CINNAMON SWIRL**  
PAPETTI, 100/2.5 OZ  
# 520100



**DUTCH WAFFLE WHOLE GRAIN**  
J&J, 1/48 CT  
# 931471



**BUTTERMILK BISCUIT BAKED, EASY SPLIT**  
PILLSBURY, 120/2.25 OZ  
# 041026



**BISCUIT SANDWICH SAUSAGE, EGG & CHEESE**  
JIMMY DEAN, 12/4.9 OZ  
# 231303



# PASTRIES & MUFFINS

## THAW & SERVE

ITEM#	DESCRIPTION	PACK SIZE	BRAND
914617	CROISSANT LG BAKED BUTTER	48/3 OZ	PILLSBURY
921012	CINNAMON ROLLS THAW/SERVE	24/6 OZ	DAVIDS
922399	DANISH ASST IW 3OZ T&S	24/3 OZ	CHEF PIERRE
915165	DANISH MINI SQUARE ASSORT	120/1.6 OZ	DIMITRIA
928820	MUFFIN MINI .9OZ BLUEBERRY T&S	108/.9 OZ	CHEF PIERRE
928819	MUFFIN MINI .9OZ CHOC CHUNK	108/.9 OZ	CHEF PIERRE
921161	MUFFIN WGR CRAN APPLE YOGURT	12/5.8 OZ	MORRISON
120908	SCONE BLUEBERRY PAN & BAKE	80/4 OZ	DAVIDS
120907	SCONE CINNAMON CHIP P&B	80/4 OZ	DAVIDS
120901	SCONE CRANBERRY ORANGE P&B	80/4 OZ	DAVIDS



**DOUBLE CHOCOLATE CHIP MUFFIN**  
ITEM #921105  
12/6 OZ



**CHOCOLATE CHIP BAKED MUFFIN**  
ITEM #921135  
12/6 OZ



**BANANA NUT MUFFIN**  
ITEM #921137  
12/6 OZ



**CORN MUFFIN**  
ITEM #921134  
12/6 OZ



**FRENCH TOAST MUFFIN**  
ITEM #995488  
12/6 OZ



**RED VELVET YOGURT MUFFIN**  
ITEM #995489  
12/6 OZ

# BATTERS & DOUGHS

ITEM#	DESCRIPTION	PACK SIZE	BRAND
995435	MUFFIN BATTER APPLE CINN BURST	2 / 8 LB	BAKE N JOY
921116	MUFFIN BATTER BANANA NUT	2 / 8 LB	DAVIDS
995444	MUFFIN BATTER BLUEBERRY	2 / 8 LB	DAVIDS
995447	MUFFIN BATTER CHOC CHIP	2 / 8 LB	DAVIDS
995428	MUFFIN BATTER CINN COFFEE CAKE	2 / 8 LB	BAKE N JOY
995446	MUFFIN BATTER CORN	2 / 8 LB	DAVIDS
995403	MUFFIN BATTER CRAN ORANGE NUT	2 / 8 LB	BAKE N JOY
921128	MUFFIN BATTER DBL CHOC CHIP	2 / 8 LB	DAVIDS
995463	MUFFIN BATTER FRENCH TOAST	2 / 8 LB	DAVIDS
995448	MUFFIN BATTER HEALTHY HARVEST	2 / 8 LB	DAVIDS
995408	MUFFIN BATTER LEMON FLAVORED	2 / 8 LB	BAKE N JOY
120869	MUFFIN BATTER LEMON POPPY	2 / 8 LB	DAVIDS
995425	MUFFIN BATTER PISTACHIO FLAV	2 / 8 LB	BAKE N JOY
995449	MUFFIN BATTER RAISIN BRAN	2 / 8 LB	DAVIDS
921215	MUFFIN BATTER RED VELVET	2 / 8 LB	DAVIDS
915358	CINNAMON DOUGH ROLL	100/3 OZ	PILLSBURY
700485	CROISSANT DOUGH LARGE BUTTER CURVED	80/4 OZ	DAVIDS
041035	DANISH DOUGH SLAB	2/15 LB	PILLSBURY
120904	SCONE DOUGH ASST CINN/BLUE/RAISN	80/4 OZ	DAVIDS
120908	SCONE DOUGH BLUEBERRY IQF	80/4 OZ	DAVIDS
120907	SCONE DOUGH CINNAMON CHIP IQF	80/4 OZ	DAVIDS
120901	SCONE DOUGH CRANBERRY ORANGE IQF	80/4 OZ	DAVIDS
120910	SCONE DOUGH PUMPKIN IQF	80/4 OZ	DAVIDS





# FRESH CUT PRODUCE

ITEM #	DESCRIPTION	PACK SIZE	ITEM #	DESCRIPTION	PACK SIZE
102490	APPLE DICED	4/5 LB	109157	ONION RED RING SLICED SLAB	4/5 LB
102519	BEET GOLD PEELED	1/25 LB	109153	ONION RED STRAWS (STRIPS)	4/5 LB
102410	BEET RED DICED / SLICED	4/5 LB	107647	ONION SLICED YELLOW	4/5 LB
107598	BEETS PEELED RED 25 LB	1/25 LB	110066	ONIONS RED PEELED	1/25 LB
109460	BROCCOLI SLAW	2/5 LB	102765	ONIONS YELLOW PEELED	1/25 LB
109335	BRUSSEL HALVES	2/5 LB	102447	PARSNIPS DICED	4/5 LB
102748	CABBAGE GREEN SHREDDED	4/5 LB	107645	PEAR PEELED	4/5 LB
109039	CABBAGE RED SHREDDED	4/5 LB	109754	PEPPER DICED GREEN	4/5 LB
102762	CANTALOUPE CHUNKS FRESH	4/5 LB	110036	PEPPER DICED MIXED	4/5 LB
107629	CARROT DICED	4/5 LB	107559	PEPPER DICED RED	4/5 LB
102536	CARROT SHREDDED	4/5 LB	102458	PEPPER SLICED GREEN	4/5 LB
107641	CARROT STEW CUT	4/5 LB	107648	PEPPER SLICED RED	4/5 LB
109043	CARROT STICKS	4/5 LB	102461	PINEAPPLE CHUNKS	4/5 LB
109053	CELERY DICED	4/5 LB	102627	POTATO DICED FRESH	4/5 LB
102607	CELERY STICKS	4/5 LB	107692	POTATO DICED RED B	1/25 LB
102789	COLLARDS CHOPPED	4/3 LB	102462	POTATO PEELED	1/25 LB
102421	CORN HUSKED	1/42 CT	102617	POTATO QUARTERED RED B	1/25 LB
102760	CUCUMBERS DICED/PEELED	4/5 LB	107644	POTATO YAM DICED/PEELED	1/25 LB
102433	HONEYDEW CHUNKS	4/5 LB	983780	POTATO YAM PEELED	1/25 LB
102692	MANGOES DICED	4/5 LB	107566	SALAD FRUIT	4/5 LB
107563	ONION DICED FINE	4/5 LB	109969	SQUASH BUTTERNUT DICED 1/2"	2/5 LB
109152	ONION DICED RED	4/5 LB	107612	SQUASH GREEN DICED	4/5 LB
109151	ONION JULIENNE YELLOW	4/5 LB	107698	SQUASH YELLOW DICED	4/5 LB
102569	ONION RED JULIENNE	4/5 LB	102483	TOMATO DICED	4/5 LB



**VEGGIE POWER BLEND**  
# 109551 - 4/2 LB



**PICO DE GALLO**  
# 102460 - 4/5 LB



**BROCCOLI SLAW**  
# 109460 - 2/5 LB



**SHAVED BRUSSEL SPROUTS**  
# 107330 - 2/3 LB



**WATERMELON CHUNK**  
# 102016 - 4/5 LB



# VEGGIE BLENDS



**ANTIGUA BLEND**  
ITEM # 941503 - 8/3 LB  
broccoli, cauliflower, green beans,  
carrots & red bell peppers



**MONACO BLEND**  
ITEM # 700261 - 8/3 LB  
green and wax beans with carrots



**MONTEREY BLEND**  
ITEM # 941508 - 8/3 LB  
broccoli, cauliflower, carrots &  
yellow carrots



**SONOMA BLEND**  
ITEM # 941500 - 8/3 LB  
broccoli, sugar snap peas, orange  
& yellow carrots



**TUSCAN BLEND**  
ITEM # 700231 - 8/3 LB  
green beans, carrots, yellow squash,  
zucchini & red bell pepper



**MIREPOIX BLEND**  
ITEM # 99589 - 12/2 LB  
onion, carrot & celery



**MEDITERRANEAN BLEND**  
ITEM # 941501 - 6/2.5 LB  
zucchini, squash, peppers, onions,  
carrots & green beans



**FLAME ROASTED  
PEPPER & ONION**  
ITEM # 833088 - 6/2.5 LB  
onion, green & red bell peppers flame  
roasted with olive oil



**UNSEASONED  
PEPPER & ONION**  
ITEM # 700303 - 6/2.5 LB  
onion, green & red bell peppers



**SWEET CORN &  
JALAPENO BLEND**  
ITEM # 883009 - 6/2.5 LB  
sweet & white corn, jalapeno, green  
onion, garlic & cilantro



**SICILIAN BLEND**  
ITEM # 944815 - 6/4 LB  
green bean, carrots, cauliflower, red  
pepper, yellow pepper, onions



**NORMANDY BLEND**  
ITEM # 944816 - 6/4 LB  
broccoli, cauliflower, sliced carrots,  
zucchini, yellow squash





# VALUE ADDED



# COMMODITY PRODUCE

<b>CELERY</b> #109051	<b>CELERY DICED</b> #109053	<b>CELERY STICKS</b> #102607
30 count 60 min of labor (diced) 50 min of labor (sticks)	4/5lb bags ZERO Labor	4/5 lb bags ZERO Labor
Gross Weight = 60lb 60% Yield	Gross Weight = 20lb 100% Yield	Gross Weight = 20lb 100% Yield
Case Cube = 2.09 Net Weight = 36lb	Case Cube = .82 Net Weight = 20lb	Case Cube = .82 Net Weight = 20lb

<b>CAULIFLOWER</b> #109047	<b>CAULIFLOWER FLORETS</b> #109338	<b>CAULIFLOWER RICE</b> #751340
12 count 25 minutes of Labor	4/3lb bags ZERO Labor	6/2 lb bags ZERO Labor
Gross Weight = 28 lb 35% Yield	Gross Weight = 12 lb 100% Yield	Gross Weight = 11lb 100% Yield
Case Cube = 1.45 Net Weight = 9.8 lb	Case Cube = .41 Net Weight = 12 lb	Case Cube = 1 Net Weight = 11 lb

<b>CARROTS</b> #109041	<b>CARROTS MATCHSTICK</b> #102024	<b>CARROT STICKS</b> #109043	<b>DICED CARROTS</b> #750180
50 lb 180 min of Labor (sticks) 150 min of Labor (shredded)	4/5 lb bags ZERO Labor	4/5 lb bags ZERO Labor	2/5 lb bags ZERO Labor
Gross Weight = 50lb 65% Yield	Gross Weight = 20lb 100% Yield	Gross Weight = 20lb 100% Yield	Gross Weight = 10lb 100% Yield
Case Cube = 1.63 Net Weight = 32.5lb	Case Cube = 1.01 Net Weight = 20lb	Case Cube = 1.01 Net Weight = 20lb	Case Cube = .56 Net Weight = 10 lb

<b>BROCCOLI</b> #109028
14 count Broccoli 30 minutes of Labor
Gross Weight = 25 lbs 40% Yield
Case Cube = 1.52 Net Weight = 10 lbs

<b>CABBAGE</b> #109033	<b>SHREDDED CABBAGE</b> #102748	<b>RED CABBAGE</b> #751089	<b>SHREDDED RED CABBAGE</b> #109039
50 lb box 70 minutes of Labor	4/5 lb bags ZERO Labor	14-16 ct 70 minutes of Labor	4/5 lb bags ZERO Labor
Gross Weight = 50lb 65% Yield	Gross Weight = 20lb 100% Yield	Gross Weight = 50lb 65% Yield	Gross Weight = 20lb 100% Yield
Case Cube = 2.63 Net Weight = 32.5lb	Case Cube = 1.04 Net Weight = 20lb	Case Cube = 2.63 Net Weight = 32.5lb	Case Cube = 1.04 Net Weight = 20 lb

<b>BROCCOLI FLORETS</b> #750940
2/5 lb bags ZERO Labor
Gross Weight = 10 lbs 100% Yield
Case Cube = .96 Net Weight = 10 lbs

## Value Added Produce

- Triple Washed
- Ready to Serve
- Zero Waste
- Takes up less space in your cooler.



# SOUPS

## HEAT & SERVE

ITEM #	DESCRIPTION	PACK SIZE	BRAND
400716	SOUP BISQUE LOBSTER MAINE	4/4 LB	BLOUNT
400718	SOUP BROCCOLI & CHEDDAR CHEESE	4/4 LB	BLOUNT
962052	SOUP BUTTERNUT SQUASH & APPLE	4/4 LB	BLOUNT
400760	SOUP CHICKEN & DUMPLING ABF	4/4 LB	BLOUNT
400740	SOUP CHICKEN KALE & SW POTATO	4/4 LB	BLOUNT
400826	SOUP CHICKEN LEMON ORZO	4/4 LB	BLOUNT
400717	SOUP CHICKEN NOODLE	4/4 LB	BLOUNT
962029	SOUP CHICKEN NOODLE	4/4 LB	BLOUNT
400722	SOUP CHOWDER NEW ENGLAND CLAM	4/4 LB	BLOUNT
400719	SOUP CREAMY TOMATO GTF	4/4 LB	BLOUNT
961310	SOUP ITALIAN WEDDING	4/4 LB	BLOUNT
400844	SOUP LOBSTER BISQUE	4/4 LB	BLOUNT
700742	SOUP MINISTRONE	4/4 LB	BLOUNT
400715	SOUP SHRIMP AND ROAST CORN	4/4 LB	BLOUNT
400721	SOUP TURKEY SAUSAGE AND KALE	4/4 LB	BLOUNT

# PRE-MADE SALADS

ITEM #	DESCRIPTION	PACK SIZE	BRAND
530676	BEETS SALAD SLICED	6/10 #	PACKER
070101	CHICKEN SALAD	4/4 LB	SALLY SHERMAN
070248	COLE SLAW ZTF	2/10 LB	SALLY SHERMAN
070230	COLESLAW	1/30 LB	SALLY SHERMAN
682276	COLESLAW HOMESTYLE	2/5 LB	DON'S
682277	MACARONI SALAD	2/5 LB	DON'S
070233	MACARONI SALAD PAIL	1/30 LB	SALLY SHERMAN
070243	MACARONI SALAD ZTF	2/10 LB	SALLY SHERMAN
070232	POTATO SALAD PAIL	1/30 LB	SALLY SHERMAN
070242	POTATO SALAD ZTF	2/10 LB	SALLY SHERMAN
517223	SEAWEED SALAD FROZEN	4/2 KG	EMERALD
070111	TUNA SALAD ZTF	2/4 LB	SALLY SHERMAN

# SOUP AS AN INGREDIENT

Prepared foods used as ingredients can also save a lot of time in the kitchen. Soup is an especially great option for this type of approach, because it can boost the flavor of just about anything it's added to.

Using tomato soup as a base for making an Indian-inspired butter chicken entree can help operators offer on-trend ethnic dishes in a fraction of the time.



## TOMATO SOUP LRS

#950491, 4/4 lb



Turn your French onion soup into an onion dip by adding cream cheese, sour cream, roasted garlic and crispy fried onions.



## FRENCH ONION SOUP

#400704, 4/4 lb



Combine roasted red pepper and smoked gouda bisque with mayonnaise and add an innovative flavor to your sandwich offerings or use as a dipping sauce.



## RED PEPPER & SMOKED GOUDA BISQUE

#950457, 4/4 lb



# BASES & SAUCES

## Saving time on slow cooking

Speed-scratch ingredients such as flavor concentrates are great for applications that normally involve lengthy cooking times or a degree of culinary expertise, such as stocks, soups, bastes and marinated items, where it can otherwise take hours to develop flavors.

### BASES

ITEM #	DESCRIPTION	PACK SIZE	BRAND
450691	BASE BEEF STOCK NO MSG	6/1 LB	EMERALD
450688	BASE CHICKEN NO MSG	6/1 LB	EMERALD
450698	BASE CLAM STOCK NO MSG	6/1 LB	EMERALD
450692	BASE CRAB STOCK NO MSG	6/1 LB	EMERALD
680093	BASE HAM NO MSG	12/1 LB	MAJOR
450694	BASE LOBSTER STOCK NO MSG	6/1 LB	EMERALD
450599	BASE MUSHROOM	6/1 LB	MINORS
995102	BASE POBLANO ROASTED	6/13.6 OZ	MINORS
450689	BASE PORK STOCK NO MSG	6/1 LB	EMERALD
451240	BASE SEAFOOD NO MSG	6/1 LB	ELITE
450693	BASE SHRIMP STOCK NO MSG	6/1 LB	EMERALD
451230	BASE SOUP CREAM	6/25.22 OZ	LEGOUT

### LIQUID CONCENTRATED BASES/PASTES

ITEM #	DESCRIPTION	PACK SIZE	BRAND
451226	BASE CHICKEN LIQUID CONCENTRATE	4/32 OZ	KNORR
451227	BASE VEGETABLE LIQUID CONCENTRATE	4/32 OZ	KNORR
450356	BASE BEEF LRS PASTE GTF	6/1 LB	GOLD LABEL
453005	BASE BEEF PASTE FLV	1/20 LB	MAJOR
450355	BASE CHICKEN PASTE LRS GTF	6/1 LB	GOLD LABEL
450660	BASE CLAM PASTE	6/1 LB	GOLD LABEL
450359	BASE VEGETABLE ROASTED PASTE	6/1 LB	GOLD LABEL

### SAUCES & GRAVIES

ITEM #	DESCRIPTION	PACK SIZE	BRAND
451342	MIX GRAVY BEEF INSTANT	8/12.16 OZ	LEGOUT
451345	MIX GRAVY TURKEY	8/1 LB	LEGOUT
460448	MIX SAUCE AU JUS	16/3.3 OZ	LEGOUT
460622	SAUCE & MARINADE SESAME GARLIC	4/.5 GAL	ASIAN MENU
940205	SAUCE CHIMICHURRI	3/30 OZ	ARMANINO
450401	SAUCE HOLLANDAISE	4/30.2 OZ	KNORR
450802	SAUCE MIX DEMI GLACE	4/28 OZ	KNORR
160677	SAUCE MIX DEMI GLACE	4/38 OZ	CUSTOM CULINARY

**SCRATCH  
QUALITY  
LESS LABOR**

Mix sour cream with fire-roasted poblano flavor concentrate to ramp up the flavor of classic fish tacos, garnished with pickled cabbage and thinly sliced red onions



**FIRE ROASTED POBLANO  
FLAVOR CONCENTRATE**

#995102, 6/13.6 oz

### BUTTER PUCKS

Frozen

**SCAMPI FLAVOR**

#107035, 160/.5 oz





# FULLY COOKED MEATS

READY TO GO!



**LAMB SHANK  
BRAISED IN DEMI  
BONEWERKS, 12/1 BAG  
#7116**



**PORK  
OSSO BUCCO  
HORMEL, 6/2 CT  
#091242**



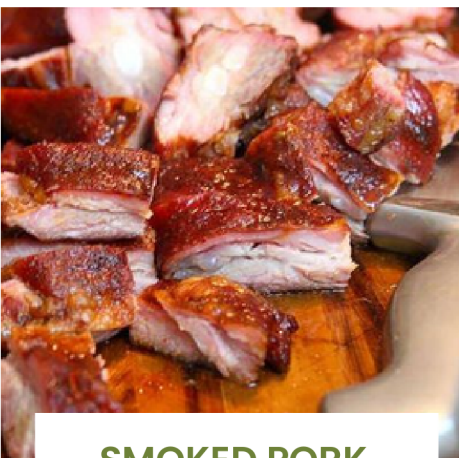
**FIRE BRAISED  
PORK RIBS  
HORMEL, 1/12 CT  
#009333**



**BABY BACK PORK  
RIBS IN SAUCE  
HATFIELD, 16/1.75 LBA  
#090430**



**PECANWOOD  
SMOKED RIB RIPS  
AUSTIN BLUE, 4/5 LB  
#873005**



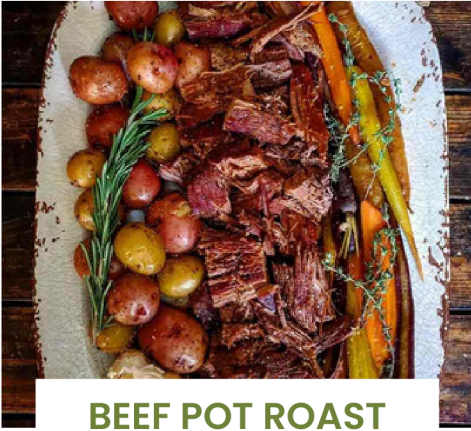
**SMOKED PORK  
RIB BITS B/I  
SMITHFIELD, 2/5 LB  
#091154**



**PORK CARNITAS  
HORMEL, 6/5 LB  
#891806**



**STEAK FLANK FIRE  
BRAISED  
HORMEL, 2/2 PC  
#111793**



**BEEF POT ROAST  
COOKED ANGUS  
FREIRICH, 1/10 LBA  
#683415**



**BONELESS  
SHORT RIBS  
FREIRICH, 4/5 LB  
#091150**



**BONELESS BRAISED  
SHORT RIB  
BONEWERKS, 20/12 OZ  
#450805**

# MEATBALLS

**MEATBALLS ALL BEEF  
NONNA'S,  
#413355, 160/1 OZ  
#413340, 80/2 OZ**

**MEATBALLS BEEF & PORK  
NONNA'S, 160/1 OZ  
#413360**

**MEATBALLS CHICKEN & BEEF  
BUONA VITA, 160/1 OZ  
#861603**

**MEATBALLS BEEF & LAMB  
BUONA VITA, 2/5 LB  
#413353**



ITEM #	DESCRIPTION	PACK SIZE	BRAND
091423	BEEF BRISKET BURNT ENDS F/C	2/5 LB	AUSTIN BLUES
683415	BEEF POT ROAST COOKED ANGUS	1/10 LBA	FREIRICH
450815	BEEF SHORT RIBS BRAISED	25/9.3 OZ	BONEWERKS
680072	BEEF TACO FILLER FC	4 / 5 LB	JTM
007887	BRATWURST LINK 4-1 FC FROZ	1 / 10 LB	SCHMALZ
918006	CHORIZO CRUMBLES VGT FC	2 / 5 LB	NONNA'S
111716	CRUMBLES BEEF PLAIN VGN CKD	2/5 LB	BEYOND MEAT
871601	GYRO MEAT SLICES CKD	4/4 LB	CHICAGO
872422	GYRO SLICES BEEF/LAMB FC	2 / 5 LB	KRONOS
683391	PORK BELLY RUBBED SMOKED	6/1.5 LBA	BROOKWOOD
091834	PORK PULLED CHUNKY CKD	2/5 LB	BROOKWOOD
065045	PORK RIBS BACK CKD W/SAUCE	14/24 OZ	LLOYD'S
093035	PORK SHANK FC OSSO BUCO	6/3 LB	FARMLAND
091238	PORK WINGS RIBEEZ FULLY CKD	1/11 LB	HATFIELD
091339	PRIME RIB COOKED BONELESS	2/14 LB	FREIRICH
962801	PULLED PORK COOKED FRZ NO SAUCE	4/2.5 LB	SMITHFIELD
870631	RIBS ST LOUIS FC HICKORY	8 / 2PC	SMITHFIELD
008095	VEAL FORESHANK OSSO CKD SAUCE	12/12-16 OZ	CATELLI





## **GAIN EFFICIENCIES**

- SERVE EVERY OUNCE OF PROTEIN PURCHASED
- KNOW EXACT PORTION COST FOR EVERY ITEM
- UNIFORM SIZE & COOKING TIME
- DON'T PAY FOR UNUSED BY-PRODUCT
- INVENTORY BUFFER/FEWER SHORTAGES

## **MAXIMIZE LABOR**

- REDUCE SKILL LABOR COSTS FOR TRIMMING, SKINNING & BONING
- REDUCE LABOR COSTS FOR INVENTORY CONTROL
- LESSEN STAFF SAFETY CONCERNS/LOWER INSURANCE COSTS

## **MANAGE INVESTMENT COSTS**

- SMALLER PHYSICAL INVENTORY
- GREATER EFFECTIVENESS
- REDUCE SPOILAGE
- REDUCE COOLER SPACE & EQUIPMENT NEEDS

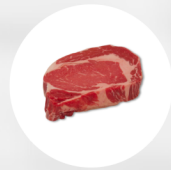
## **THE BOTTOM LINE**

At first glance portion control steaks seem more expensive than buying subprimals. However in the long run, they are much more cost effective when considering labor hours, waste, & butchery skills of your team.

Let the Cutshop experts do the work for you!

# PRE -PORTIONED MEATS

ITEM #	DESCRIPTION	PACK SIZE
--------	-------------	-----------



## RIBEYE

009873	BF RIB STEAK BNLS CHOICE	20/8 OZ
871639	BF RIB STEAK BONE/IN CHOICE	10/16 OZ
871666	BF RIB STEAK COWBOY FRNCH CHOICE	10/16 OZ



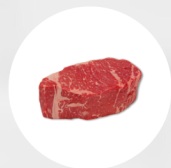
## TENDERLOIN

008073	BF TENDERLOIN STEAK METRO 6OZ	32/6 OZ
007846	BF TENDERLOIN STK C/C 1855 8OZ	20/8 OZ
871589	BF TENDERLOIN MEDALLION 3PC 9OZ	60/3 OZ



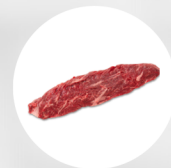
## T-BONE & PORTERHOUSE

871693	BF PORTERHOUSE STEAK CHOICE	10/16 OZ
871694	BF PORTERHOUSE STEAK CHOICE	9/18 OZ
117412	BF TBONE STEAK CHOICE	14/12 OZ
871709	BF TBONE STEAK CHOICE	12/14 OZ



## STRIP STEAK

007793	BF STRIPLOIN B/I C/C ANGUS	10/18 OZ
009452	BF STRIPLOIN BNLS C/C CHOICE	20/8 OZ
007792	BF STRIPLOIN BNLS PUB CHOICE	20/8 OZ



## HANGER STEAK

007867	BF HANGER STK PORTION CHOICE 10OZ	20/10 OZ
007891	BF HANGER STK PORTION CHOICE 8OZ	10/8 OZ



## FLAT IRON STEAK

404648	BF FLAT IRON BLADE STK CHOICE 8OZ	20/8 OZ
091010	BF FLAT IRON BLADE STK CHOICE 10OZ	16/10 OZ



## SHORT RIB

008373	BF SHORT RIBS BNLS CUT	10/16 OZ
009970	BF SHORT RIBS LOLLIPOP 12OZ	14/12 OZ
008814	BF SHORT RIB TOMAHAWK 17OZ	10/16-18 OZ
871054	BF 1/2" KOREAN SHORT RIBS 4OZ	1/10 LB

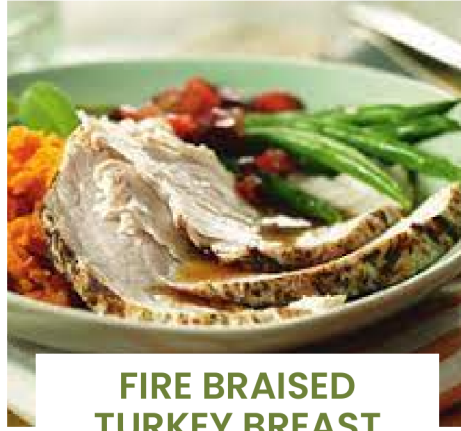


## PORK

523433	PORK RACK CHOP FRNCHD PREM RES.	14/12 OZ
--------	---------------------------------	----------



# FULLY COOKED POULTRY



**FIRE BRAISED  
TURKEY BREAST  
HORMEL  
#960051 - 27/6 OZ**



**FIRE BRAISED  
CHICKEN BREAST  
HORMEL  
#960051 - 27/6 OZ**



**FRIED CHICKEN  
8 PC BONE IN  
PERDUE, 1/15 LB  
#410564**



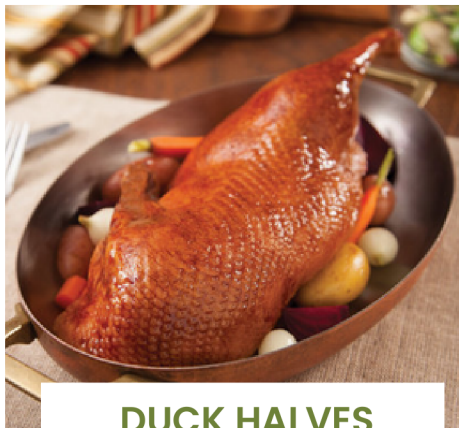
**GARLIC & ONION  
HALF CHICKEN  
BONEWERKS, 14/1.7 LB  
#450814**



**CHICKEN HALVES  
ROASTED  
HARVESTLAND, 8/2.87 LB  
#411543**



**DUCK WING  
DRUMETTES  
MAPLE LEAF, 5/2 LB  
#009761**



**DUCK HALVES  
ROASTED BONE IN  
MAPLE LEAF - 12/10.5 OZ  
#009776**



**DUCK LEG CONFIT  
PART BONE  
MAPLE LEAF, 2/12 CT  
#006794**



# FULLY COOKED POULTRY



**GRILLED CHICKEN BREAST SKEWER**  
HEAT AND SERVE  
EXPRESO, 1/30 CT  
#821180

## 3 REASONS TO ADD FULLY-COOKED CHICKEN TO YOUR KITCHEN

1

### LABOR

Reduce the labor spent managing that prep work and cook times.

2

### SAFETY

There are many uncertainties associated with cooking raw chicken, including cross contamination, over-cooking, or the risk of serving undercooked meat

3

### QUALITY

Depending on who cooks the raw chicken, it's likely to be inconsistent from plate to plate, whether it's overcooked or undercooked.



## CHICKEN BREAST

ITEM #	DESCRIPTION	BRAND	PACK SIZE
400134	CHICKEN BREAST FILETS GRILLED RED LABEL FC	TYSON	40/4 OZ
410532	CHICKEN BREAST FILETS GRILLED RED LABEL FC	TYSON	54/3 OZ
822119	CHICKEN BREAST ITALIAN GRILLED FC	PACKER	1/10 LB

## BREADED CHICKEN FILET

ITEM #	DESCRIPTION	BRAND	PACK SIZE
410350	CHICKEN BREAST FILLET BRD FC	GARIMARK	2/5 LB
410305	CHICKEN BREAST FILET BRD ITALIAN FC	GARIMARK	35/4.7 OZ
410520	CHICKEN BREAST FILET BRD ITALIAN FC	TYSON	34/4.7 OZ
411100	CHICKEN BREAST FILET BRD MILD FC	TYSON	40/4 OZ
410526	CHICKEN BREAST FILET BRD NAE HOMESTYLE FC	TYSON	46/3.5 OZ

## CHICKEN WINGS

ITEM #	DESCRIPTION	BRAND	PACK SIZE
820502	CHICKEN WING OF FIRE CKD	TYSON	2/5 LB
730235	CHICKEN WING ROTISSERIE CKD	PERDUE	2/5 LB
900323	CHICKEN WING ZING BNLS BRD CKD	PIERCE	2/5 LB
821143	CHICKEN WINGETTES CKD 2NDS	BRAKEBUSH	1/10 LB

## DICED CHICKEN

1/2" WHITE & DARK MEAT  
WAYNE FARMS, 1/10 LB  
#007865

1/2" BREAST MEAT  
TYSON, 2/5 LB  
#938012

1/2" BREAST MEAT  
PIERCE, 2/5 LB  
#090007

## CHICKEN STRIPS

BREAST STRIPS CHAR GRILLED  
HARVESTLAND, 2/5 LB  
#411582

BREAST STRIPS GRILLED  
TYSON RED LABEL, 2/5 LB  
#410524

FAJITA BREAST STRIPS W/  
GRILL MARKS  
PIERCE, 1/10 LB  
#821508

## PULLED CHICKEN

BBQ PULLED CHICKEN  
HORMEL, 2/5 LB  
#091235

BREAST MEAT PULLED  
TYSON, 2/5 LB  
#680424

WHITE & DARK MEAT PULLED  
TYSON, 2/5 LB  
#822001



# SEAFOOD

## RAW IQF PORTIONED

ITEM #	DESCRIPTION	PACK SIZE
960617	CATFISH FILLET 5-7 OZ	1/15 LB
960999	CATFISH FILLET 7-9OZ	1/15 LB
961019	COD LOIN RAW IQF 4 OZ	1/10 LB
961278	COD LOIN RAW IQF 6 OZ	1/10 LB
961004	FLOUNDER FILLET IQF 3-5	1/10 LB
221004	FLOUNDER FILLET IQF 8OZ	80/8 OZ
960614	HADDOCK FILLETS 6-8 OZ	1/10 LB
25507	MAHI MAHI 8OZ PORTIONS IVP	1/10 LB
963011	MAHI MAHI IQF 6OZ	26/6 OZ
680351	MAHI MAHI PIECES 1-3 OZ	1/10 LB
961318	RED SNAPPER 6-8 OZ FILLET	1/10 LB
961234	SALMON ATLANTIC FILLET 4OZ	40/4 OZ
961625	SALMON ATLANTIC FILLET 8OZ	1/10 LB
961325	SALMON FAROE ISLAND 6 OZ	1/10 LB
301496	SALMON POKEY FRESH CUT	1/10 LB
961611	SEA BASS CHILEAN S/L 8OZ IQF	1/10 LB
961264	TILAPIA FILLET 3-5OZ	1/10 LB
961261	TILAPIA FILLET 5-7OZ	1/10 LB
960415	TUNA POKE CUBES	1/10 LB
961627	TUNA STEAK 4OZ SKNL BNLS	1/10 LB

### COOKED SHRIMP

110435	SHRIMP 13/15 P&D CKD T/ON	5/2 LB
961220	SHRIMP 16/20 P&D CKD T/ON	5 / 2 LB
101004	SHRIMP 16/20 P&D CKD T/ON WHT	5 / 2 LB
101005	SHRIMP 21/25 P&D CKD T/ON WHT	5 / 2LB
965038	SHRIMP 31/40 P&D CKD T/ON	5 / 2 LB
965062	SHRIMP 31/40 P&D CKD T/OFF	5 / 2 LB
962430	SHRIMP 41/50 P&D CKD T/OFF PW	5 / 2 LB
780269	SHRIMP 100/250 CKD T/OFF	2/ 5 LB
062003	SHRIMP 250/350 CKD TITI	4 / 5 LB

## BREADED & BATTERED



**SHRIMP TEMPURA**  
21/25 TAIL ON  
ITEM #480537 - 4/2.5 LB



**SHRIMP COCONUT**  
**BREADED 16/20**  
ITEM #480525 - 4/2.5 LB



**SHRIMP POPCORN**  
**BUTTERMILK**  
ITEM #962039 - 4/2.5 LB



**CALAMARI T&T**  
**DIPT N' DUSTED**  
ITEM #965046 - 6/2 LB



**CALAMARI RINGS**  
**BREADED**  
ITEM #965066 - 6/2 LB



**PANKO BREADED**  
**OYSTERS**  
ITEM #965022 - 6/2.5 LB LB



**BREADED SCALLOPS**  
**26/30 CT**  
ITEM #960007 - 4/2.5 LB



**FISH PATTIES 4 OZ**  
**BREADED**  
ITEM #100012 - 1/10 LB



**COD BREADED WEDGE**  
**4 OZ**  
ITEM #961327 - 2/5 LB



**COD NUGGETS**  
**BREADED 1 OZ**  
ITEM #901312 - 1/10 LB



# BEER BATTERED SEAFOOD



**BEER BATTERED  
SHRIMP 31/35  
#960627 - 1/10 LB**



**BEER BATTERED  
SHRIMP 28/36  
#480540- 4/2.5 LB**



**COD  
BEER BATTERED  
#023895 - 1/10 LB**



**CRAFT BEER  
BATTERED COD  
#962455 - 4/2.5 LB**



**BASS PALE ALE  
BATTERED  
COD FILLET  
#960009 - 80/2 OZ**



**CORONA  
BATTERED COD  
ITEM #960032 - 40/4 OZ**



**GUINNESS BATTERED  
SHRIMP 26-30 CT  
#801808 - 1/10 LB**



**YUENGLING  
BATTERED HADDOCK  
#960051 - 27/6 OZ**



# DESSERTS

## SPEED SCRATCH

How do you capture that dessert-craving customer when there's no pastry chef on staff, and the kitchen already is slammed? Some operators are going the speed-scratch route, starting with ready-made components and adding fresh ingredients and flourishes back-of-house to create signature desserts.

### MIXES

ITEM #	DESCRIPTION	BRAND	PACK SIZE
120640	MIX BROWNIE DBL DARK CHOCOLATE	GHIRADELLI	4 / 7.5 LB
120667	MIX BROWNIE FUDGE DECADENT	KRUSTEAZ	6 / 7 LB
123005	MIX CAKE CINNAMON STREUSEL	GENERAL MILLS	6 / 4.66 LB
012236	MIX CAKE DEVILS FOOD	CONTINENTAL	6 / 5 LB
001724	MIX CAKE GINGERBREAD	HOSPITALITY	6 / 5 LB
125063	MIX CAKE SPICE	CMC	1 / 50 LB
120623	MIX CAKE WHITE COMPLETE	CONTINENTAL	6 / 5 LB
012994	MIX CAKE YELLOW	KRUSTEAZ	6 / 5 LB
125057	MIX COFFEE CAKE	CMC	1 / 50 LB
120676	MIX DONUT NUGGET CAKE	BAKE N JOY	1 / 50 LB
932517	MIX FUNNEL CAKE	FUNNEL CAKE FAC	6 / 5 LB

ITEM #	DESCRIPTION	BRAND	PACK SIZE
012991	MIX CREME BRULEE	PASTRY1	1 / 11 LB
863611	MIX MERINGUE	IRCA	6 / 2.2 LB
682663	MIX MOUSSE CHOCOLATE DARK	PARIS	5 / 2.2#
682668	MIX MOUSSE WHITE CHOCOLATE	PARIS	5 / 2.2#

### FROZEN DOUGHS

ITEM #	DESCRIPTION	BRAND	PACK SIZE
932580	DOUGH FILO #10	KONTOS	24/1 LB
932502	DOUGH FILO #4 14X18	KONTOS	24/1 LB BOX
915512	DOUGH PASTRY PUFF	PILLSBURY	2/15 LB
915125	DOUGH PASTRY PUFF 5X5 SQUARE	PILLSBURY	120/2 OZ
915123	DOUGH PASTRY PUFF 10X15 ZTF	PILLSBURY	20/12 OZ
915124	DOUGH PASTRY PUFF 5X5 SQUARE	PENNANT	120/2 OZ
931009	DOUGH PASTRY PUFF SHEET 10X15	PENNANT	20/12 OZ
477665	DOUGH PIE SHEET FROZEN	PILLSBURY	1/17 LB

### FILLINGS RTU

ITEM #	DESCRIPTION	BRAND	PACK SIZE
147862	CREAM CANNOLI WITH CHOC CHIPS	SPERIKOTTA	4/1.5 LB
404005	FILLING BAVARIAN CREAM RTU	DAWN	1 / 35 LB
112024	FILLING BLUEBERRY	BRILL	1 / 20 LB
526489	FILLING CHOCOLATE SILK	KARP'S	1 / 20 LB
400607	FILLING GLAZE STRAWBERRY	GLOBE	6 / #10
400692	FILLING PUMPKIN	LIBBY	24 / 15 OZ
400611	FILLING SGF APPLE PIE SLICED	DAWN	1 / 18 LB

## READY-TO-FILL

Delicious vessels ready to be filled with mousse, ganache, pastry cream, fruit, and more. The perfect base for your sweetest creations!



### CANNOLI SHELLS

# 147853- Large  
48/1.06 oz, Pannellino  
# 174860- Mini 3"  
120/.5 oz, Siciliano  
# 147861- Chocolate Dip Mini 3"  
120/.6 oz, Siciliano



### SWEET BUTTER TART SHELL

Round, 2"  
1/96 ct, Pidy  
#863090



### TART SHELL MINI

Square, 1.5"  
1/240 ct, Pidy  
#863105



### TART SHELL FLUTED SWEET BUTTER

4"  
72 ct, Pidy  
#863070



### DARK CHOCOLATE PISA CUP

1/168 ct, Dobra  
#863596



### SHELL CUP SPICY ASSORTMENT

1.25"  
1/96 ct, Pidy  
#863114



### DARK CHOCOLATE TRUFFLE SHELL

1/504 ct, Dobra  
#863595



### SHELL PATTY

Round, 3.25"  
Pidy  
#915126

# INDIVIDUAL DESSERTS

## SIMPLY SERVE

Individual desserts will save you time, labor & money. Pre-portioned sweets make it easy for your culinary team to simply heat & serve without any waste and also leave your customers satisfied at the end of a great meal.



### PEANUT BUTTER EXPLOSION

An combination of fudge brownies, velvety smooth peanut butter mousse, rich chocolate cake & finished with brownie chunks, peanut butter chips & drizzled in chocolate fudge.

#121198, 24/6.75 oz



### LIL RED VELVET

Rich red velvet cake is layered with sweet cream cheese filling and finished with a dark chocolate feather garnish. David's Cookies

#121269 24/5.25 oz



### CHOCOLATE TRILOGY

Enjoy rich chocolate cake layered with dark chocolate, milk chocolate & white chocolate mousse and finished with dark chocolate curls. David's Cookies

#121549, 24/5.75 OZ



### MANGO GUAVA CHEESECAKE

A refreshing duo of brightly flavored mango & guava cheesecakes on a classic graham crust topped with a light mango mousse and finished with toasted almonds. David's Cookies

#121268 24/6 oz



### MINI CHEESECAKE PLAIN

Junior's famous cheesecake in a mini version!

2 oz - #121323 1/24 ct  
4 oz - #121337 2/18 ct  
Retail - #121335 9/4 oz



### TIRAMISU

Layers of yellow cake soaked in coffee and dark rum sandwiched with a light mascarpone mousse. Finished with a dusting of cocoa powder and a chocolate covered espresso bean.

#121209, 24/4 oz



### CHOCOLATE LAVA CAKE

A rich, moist hand crafted chocolate ganache is surrounded by a delectable chocolate cake. Simply heat and enjoy! (Heat & Serve) David's Cookies

#121267 24/4 oz



# READY MADE MEALS



PACKAGED &  
DELIVERED IN A  
HEAT RETAINING  
DISPOSABLE PAN



**LASAGNA VEGETABLE  
WHITE SAUCE**  
ITEM # 860417 - 4/96 OZ

*Freshly made noodles and whole grains layered with sea salt, spinach, broccoli, carrots, a blend of five cheeses, and breadcrumbs.*



**CREAMED CHIPPED BEEF**  
ITEM # 860209 - 4/76 OZ

*Tender slices of chipped beef set in a rich, delicious lightly seasoned cream sauce.*



**CHICKEN PARMESAN**  
ITEM # 860407 - 4/62 OZ

*Seasoned chicken lightly coated with breadcrumbs, covered in chunky tomato sauce and topped with Parmesan and mozzarella.*



**STUFFED CABBAGE WITH  
BEEF SAUCE**  
ITEM # 860201 - 4/92 OZ

*Seasoned beef, long grain rice and spices hand-folded into tender cabbage leaves, topped with rich, chunky tomato sauce.*



**SALISBURY STEAK WITH  
GRAVY TRAY**  
ITEM # 860211 - 4/69 OZ

*Freshly ground beef mixed with onions, rolled oats, and seasonings, oven-roasted for tender texture and smothered with hearty gravy.*



**MEATLOAF WITH  
BROWN GRAVY**  
ITEM # 860451- 4/58 OZ

*Ground beef, onions, tomato puree, green peppers and oats, smothered with a savory brown gravy.*



**BEEF STEW**  
ITEM # 860452 - 4/72 OZ

*With sliced carrots, russet potatoes, peas, onions and spices.*



**MACARONI & CHEESE  
WHITE CHEDDAR**  
ITEM # 860208 - 4/64 OZ

*Al dente cavatappi pasta smothered in a creamy white cheddar sauce featuring 9-month aged Sharp Cheddar Cheese from New York.*



**CREAMED SPINACH**  
ITEM #860406 - 4/96 OZ

*Fresh, green spinach leaves combined with diced onions in a lightly seasoned, creamy sauce.*













[WWW.DRISCOLLFOODS.COM](http://WWW.DRISCOLLFOODS.COM)